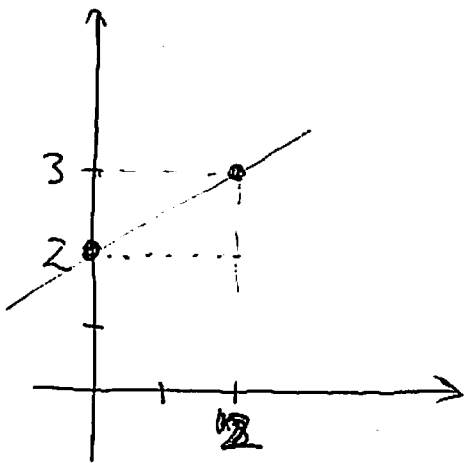


SHOW ALL YOUR WORK! GOOD LUCK!

NAME: _____

1. (5pts.) Find an equation for the line that passes through the points (0,2) and (2,3).



$$y\text{-intercept} : b = 2$$

$$\text{slope} : m = \frac{3-2}{2-0} = \frac{1}{2}$$

So, the equation is:

$$y = 2 + \frac{1}{2}x$$

or

$$y = \frac{x}{2} + 2$$

2. (5pts.) Find the domain of the function given by the formula $f(t) = \sqrt{t^3 + 1}$.

$$t^3 + 1 \geq 0$$

$$t^3 \geq -1$$

$$t \geq \sqrt[3]{-1}$$

$$t \geq -1$$

$$D = [-1, \infty)$$

